



Week 1: Welcome (back) to LC!



To new and returning students alike, we want to welcome everybody (back) to campus! We hope your summers were restorative, and that you are ready for an amazing year with IME.

For PDF versions of archived, visit the [IME website](#) or click this [link](#).

What's Happening

Here's what's in this week's IME Newsletter:

IME Events

- Get involved with Heritage Month Celebrations!
- BIPOC Community Social
- First-Generation Community Circle
- Calling all Hispanic, Chicano/a, Latino/a, Latinx, Latine students!
- Calling all new BIPOC &/or First-Gen Students! Join GEM!

Ray Warren Symposium

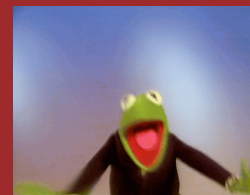
- Ray Warren Symposium Community Planning Meetings
- Ray Warren Symposium Art Show Curator Application!

More Events

- Join OSA for Study Skill Workshops!
- Go to El Grito with Gente Latina Unida!
- Come Join GLU for a Noche de Baile!



IME Events



Fill out the Interest
Form

Get involved with Heritage Month Celebrations!

Looking to get involved? Join any of our future Heritage Month Planning Committees!

We are currently seeking members to join the LGBTQIA+ History Month (Oct) and Indigenous Peoples' Heritage Month Planning Committees (Nov). Have a say in how we learn, honor, and celebrate.

We will start these committees 4-6 weeks prior to the actual month of celebration, we typically meet once a week or bi-weekly. Fill out the Google Form to let us know your interest!

BIPOC Community Social

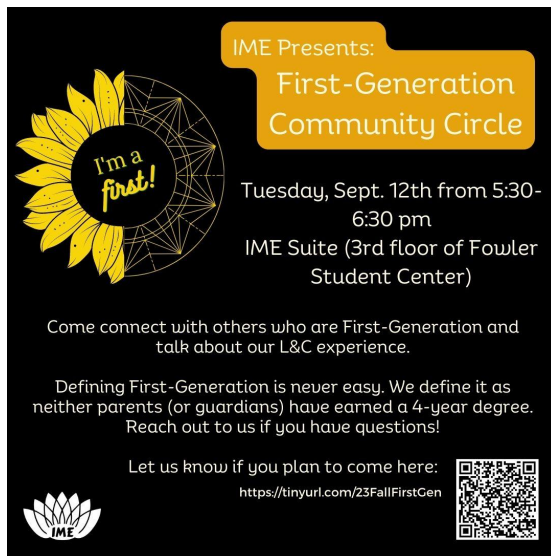
Thursday, September 7th
4:00-5:30pm
Smith Hall

Calling all BIPOC Students, Staff and Faculty! Come and be in community with other BIPOC members for our first BIPOC Community Social of the school year! This event is intended for anyone who identifies as Black, Indigenous or People of Color (BIPOC) Students, Staff & Faculty from all 3 campuses.

Appetizers will be served. We will have raffle prizes! Please let us know you plan to attend!



RSVP
Here



RSVP
Here

First-Generation Community Circle

Tuesday, September 12th

5:30-6:30pm

IME Suite (3rd floor Fowler)

Join IME's First-Gen Community Circle for students who self-identifies as first-generation college students! We define first-generation as neither guardians have earned a Bachelor's degree, however, if you feel like you don't fit this definition and would like to participate, we encourage that you do!

Come build community with other First-Generation L&C students!

Calling all Hispanic, Chicano/a, Latino/a, Latinx, Latine students!

We are excited to invite you to our community dinner, where we aim to foster a sense of togetherness by sharing and savoring favorite dishes from different Hispanic cultures.

This event is closed for those who self-identify as Hispanic, Chicano/a, Latino/a, Latinx, Latine.

Please RSVP by **THIS THURSDAY, September 9th**

Date of Event: September 16

Location: Holmes Residence Hall lounge/kitchen area

Time: 6-8:00pm

For those who want to help prepare food: 2:00pm



RSVP
Here

Calling all new BIPOC &/or First-Gen Students! Join GEM!

Come join the the Great Expectations Mentorship (GEM) program! This program is designed to provide a smooth transition to new students who identify as students of color and/or first-generation* to L&C by connecting new students (mentees) with a

2nd-4th year LC student (mentor) for a year-long mentorship program.



[Sign up for GEM Here!](#)



Ray Warren Symposium



Ray Warren Symposium Community Planning Meetings

We are so excited to collaborate with you all to organize and celebrate the 20th Annual Ray Warren Symposium on Race and Ethnic Studies. The symposium will be held on November 8–10, 2023 and we want to extend an invitation to you to our community planning meetings.

There is no prior experience necessary when attending our planning meetings, so everyone is encouraged to attend, and snacks will be provided! We appreciate any and all ideas for this year's symposium, Future Forward. We will be holding planning meetings on the following Wednesdays: 9/13, 9/27, 10/11, 10/25, 11/1 in Miller 414 from 4:30-5:30 pm.

Ray Warren Symposium Art Show Curator Application!

Every year the RWS hosts a student-led art exhibition featuring works from the LC community and beyond. Curator applications are now open!

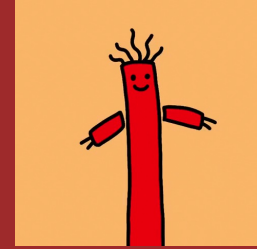
If you are interested in organizing the exhibit, please fill out and submit the form attached below by Sunday, September 10 by 6 pm.



[Apply](#)



More Events



Join OSA for Study Skill Workshops!

OSA's Study Skills Workshops are a recurring series of workshops designed to help you maximize your studying effectiveness. The series is presented once per semester and is open to all Lewis & Clark students on all three campuses. Sign up below for any or all of this fall's sessions!

Current Workshops (Fall 2023)

- Effective Notetaking Methods: Tuesday, September 19th, 3:30-4:30pm
- Project Planning/Time Management: Thursday, September 28th, 12:30-1:30pm
- Tips for Specific Executive Functioning Needs: Tuesday, October 10th, 3:30-4:30pm
- Exam Study Strategies: Thursday, October 19th, 12:30-1:30pm

[More Info About Study Skills Workshops](#)

Go to El Grito with GLU!

Come to El Grito in Portland with GLU! We'll be taking a group of students interested in attending the festival in Portland via the Trimet. El Grito festival is held in Portland and celebrates multiple Latin American countries gaining their independence. There will be performances, vendors, and much more!

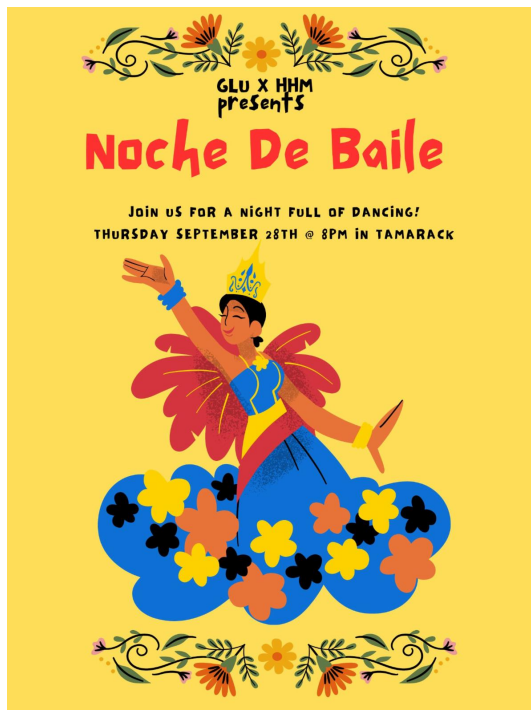
We plan on meeting Friday, Sept. 15th at 4pm

in front of the Bon and leaving together on the Trimet. We intend to leave the event at 9pm but that can be earlier or later depending on the vibe.

Please fill out the interest form (attached or by scanning the QR code on the poster) by Tuesday 9/12 so we can get a rough headcount of how many people would like a free Trimet pass.



El Grito Interest
Form



Request Dance
Music

Come Join GLU for a Noche de Baile!

Friday, September 28th
8:00-10:00pm
Tamarack Lounge

Gente Latina Unida will be hosting a Noche de Baile on Friday, September 28th! Come enjoy a night of music, dancing, and fun from 8pm-10pm! For any song requests, please fill out the google form linked below or through the QR code. We look forward to seeing everyone!



List of Events

Visit the IME Suite: 9-5pm Monday to Friday
If you want to meet with us, or need a place to study/hangout -- come to the
IME Office on the 3rd floor of Fowler.

Interested in submitting something to be added to the IME Newsletter?

We know advertising is important for your clubs, organizations, and offices.

The IME office loves to help spread the word of awesome events and opportunities. If you would like to submit something to be added to the IME newsletter, please fill out the form below. The IME newsletter goes out every Monday morning (or Tuesday if Monday is a holiday). All submissions to make it into the weekly newsletter must be done by Sunday at midnight or they will be added to the following week's newsletter.

Newsletter
Submission

Stay Connected with IME



Lewis & Clark College | 0615 SW Palatine Hill Rd., Portland, OR 97219

[Unsubscribe multicultural@lclark.edu](mailto:unsubscribe_multicultural@lclark.edu)

[Update Profile](#) | [Constant Contact Data
Notice](#)

Sent by multicultural@lclark.edu powered by



Try email marketing for free today!