

your **pacific** **northwest** home



**137 ACRES OF ICONIC PACIFIC
NORTHWEST LANDSCAPE**



**24-HOUR ACCESS TO OUR
LIBRARY ON WEEKDAYS**



11 RESIDENCE HALLS



**TAKE A HIKE! IT'S JUST A
5-MINUTE WALK TO TRYON CREEK
STATE PARK**



**VEGETARIAN AND VEGAN
OPTIONS AT ALL MEALS**

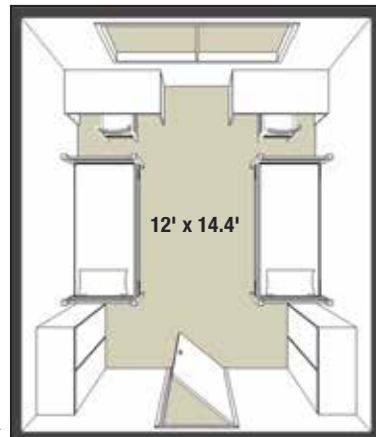


FREE LAUNDRY

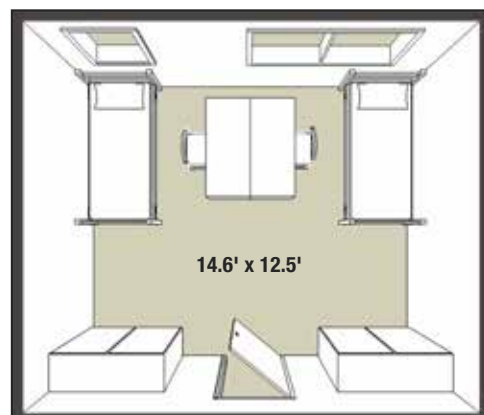
COPELAND



Platt



Platt



Howard

PLATT-HOWARD HALL

Platt-Howard is full of creative energy and excitement. Residents are eager to get to know one another, explore the college experience, and become involved in what Lewis & Clark has to offer. There is a strong culture of openness and respect; students feel they can express themselves and be accepted. Residents can often be found studying in groups in the lounges, hanging out in each other's rooms, watching TV together in the main lounge, or playing pool.

Room Type: Double occupancy

Layout: Three wings, three to four stories each

Floor Size: Platt: Six floors in two wings with 18 to 20 students each

Howard: Four floors with 28 to 30 students each

Common Areas: Platt: Lounge, kitchen, and single-sex and gender-inclusive restrooms

Howard: Lounge, kitchen, and gender-inclusive restrooms

Total Occupancy: 206 residents, 50% new students

Built: 1960

Special Features: Platt: Home of the Plateau Art Center, large main lounge with fireplace and pool table

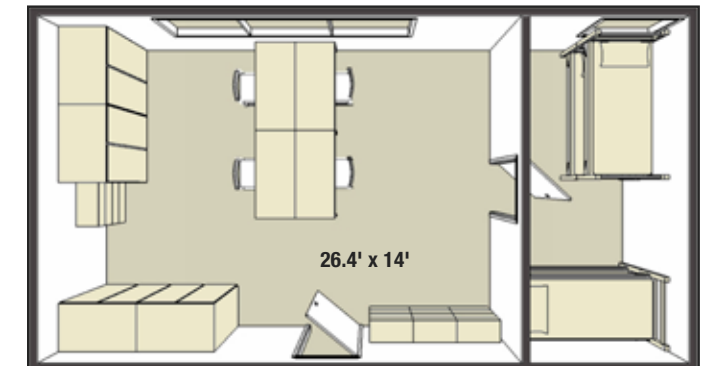
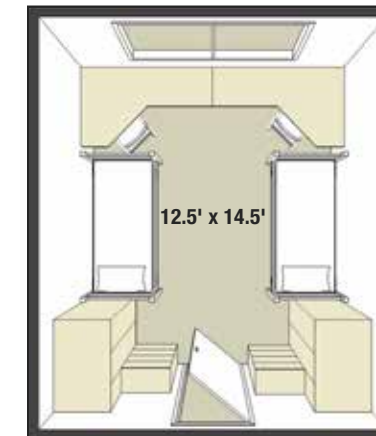
Howard: Large basement lounge, movable furniture in rooms



Howard



Copeland



COPELAND HALL

Copeland is much like Portland: a cool city with many great neighborhoods. In the main lounge, a dozen or more students watch TV or study by a crackling fire discussing the latest Exploration and Discovery lecture. In the hallways, still more visit at every open door. The sense of community is so strong here that residents often carry it with them to other venues, pulling together tables in the dining room, where they spend hours chatting over meals, and attending games and the theatre as a group.

Room Type: Single, double, triple, and quad occupancy

Layout: Seven connected wings, each with three to four stories

Floor Size: 20 floors with 9 to 14 students each

Common Areas: Lounge, kitchen, and gender-inclusive and single-sex restrooms

Total Occupancy: 308 residents, 60% new students

Built: 1963

Special Features: Large, circular main lounge with fireplace and views of the adjacent forest, grand piano, ping pong, and pool table



Copeland

Diagrams are examples and not representative of each room. Unshaded furniture is movable. Shaded furniture is built in.

PLATT-HOWARD

STEWART, AKIN, ODELL

STEWART HALL

Stewart residents share a commitment to wellness and to a living environment that supports healthy choices. Students here have much in common, including an interest in learning from one another. While the hall is generally quiet, weekly study breaks, the large recreation room with exercise equipment, and activities organized by the hall staff make Stewart a lively, fun place to live.

- Room Type:** Single, double, and triple occupancy
- Layout:** Two stories
- Floor Size:** Five floors with 16 to 36 students each
- Common Areas:** Lounge, kitchen, and single-sex and gender-inclusive restrooms
- Total Occupancy:** 100 residents, 40% new students
- Built:** 1951
- Special Features:** Main lounge with piano and attached kitchen; pool table and exercise equipment in large, separate basement lounge; large walk-in closets; movable furniture in rooms

AKIN HALL

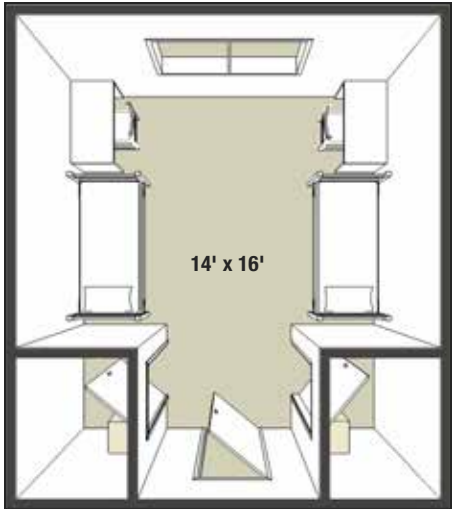
Residents of this multiculturally themed hall are genuinely engaged and interested in learning about one another, making this a very tight-knit community. It's not uncommon for students to remain in Akin for their entire residential experience. Weekly study breaks and impromptu hall dinners featuring foods from different countries also help foster a strong sense of community here.

- Room Type:** Single, double, and triple occupancy
- Layout:** Two stories
- Floor Size:** Two floors with 32–38 students each
- Common Areas:** Lounge, kitchen, and single-sex and gender-inclusive restrooms
- Total Occupancy:** 75 residents, 40% new students
- Built:** 1949
- Special Features:** Large main lounge with grand piano, fireplace, and attached kitchen; close proximity to academic center of campus; large walk-in closets; movable furniture in rooms

ODELL HALL

The most centrally located of the halls and one of the smallest, Odell typically houses a close-knit community in which residents feel appreciated as individuals. The students living in this popular hall often gather in lounges, form study groups, watch TV, play video games, or just hang out around the fireplace together.

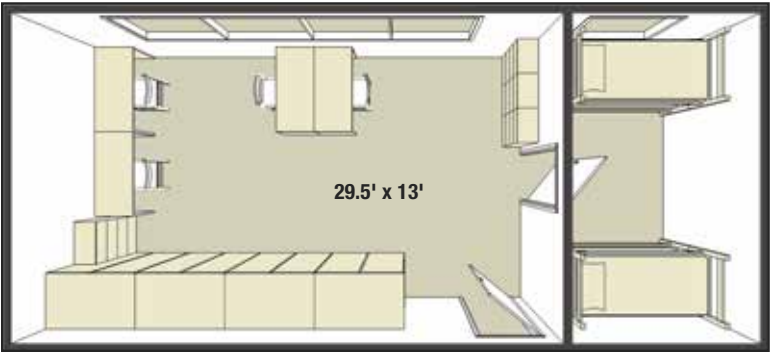
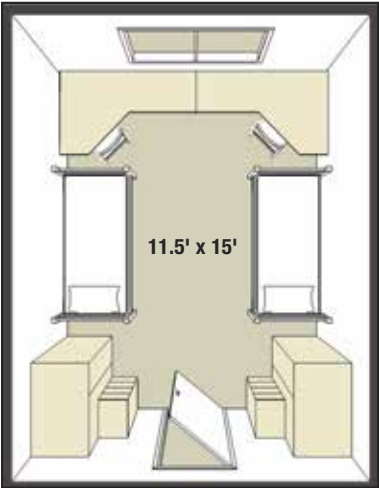
- Room Type:** Double and triple occupancy
- Layout:** Two stories
- Floor Size:** Two floors with 35–40 students each
- Common Areas:** Lounge, kitchen, and gender-inclusive restrooms
- Total Occupancy:** 82 residents, 40% new students
- Built:** 1957
- Special Features:** Large, comfortable main lounge with fireplace and attached kitchen; large walk-in closets; movable furniture in rooms



FOREST HALL

In many ways, Forest is like a traditional residence hall split into five small communities. This allows residents to enjoy the benefits of large and small settings alike and to find the elements that suit them best. Students with many different interests will find this an exciting, eclectic environment.

- Room Type:** Single, double, triple, and quad occupancy
- Layout:** Five separate buildings, each with two stories
- Floor Size:** 10 floors with 24 students each
- Common Areas:** Lounge, kitchen, and gender-inclusive restrooms
- Total Occupancy:** 289 residents, 40% new students
- Built:** 1964
- Special Features:** Community garden; single-sex options in Spruce; Juniper provides 29 single rooms for upper-division (junior and above) students; separate, central sixth building (known as Tamarack) serves as main lounge for the complex with grand piano and fireplace



Diagrams are examples and not representative of each room. Unshaded furniture is movable. Shaded furniture is built in.

FOREST

HARTZFELD

HARTZFELD HALL

Hartzfeld, which is open to second-year students and higher, appeals to people with various interests and personalities. Some like to create a quiet retreat within its brick walls, while others enjoy the opportunity the suite design affords to build close communities. Students who live in Hartzfeld Hall must be prepared to put their personal belongings in campus storage for the winter break (mid-December through mid-January) to accommodate students who must remain in campus housing during this vacation period.

Room Type: Double occupancy

Layout: Four separate buildings, each with two stories

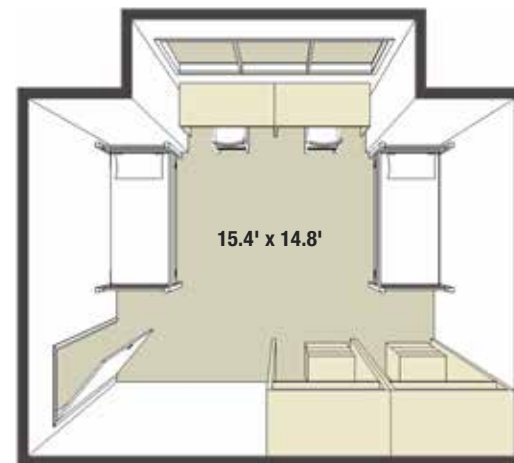
Floor Size: Eight floors with 12 students each

Common Areas: Living room, kitchen, and single-sex restrooms

Total Occupancy: 100 residents, 5% new transfer students

Built: 1975

Special Features: Upper-division (sophomore and above) buildings, suite style (i.e., two double rooms share a bathroom)



HOLMES HALL

Edna L. Holmes Hall opened in August 2012 and is now home to 169 upper-division students (sophomores, juniors, seniors, and even a few graduate and law students). Rooms in Holmes are larger than the average size on campus and almost half of the rooms are single occupancy. Holmes has attained LEED (Leadership in Energy and Environmental Design) Gold certification. The eco-friendly features of the building include the use of reclaimed wood (fir and maple) in the building materials, window switches in student rooms to reduce heat when windows are open, and monitors displaying real-time energy use.

Room Type: Single and double occupancy

Layout: Five stories with elevator

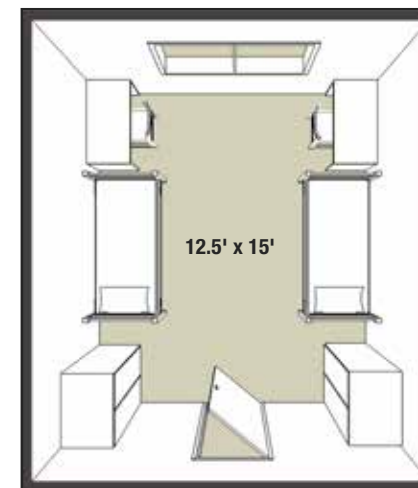
Floor Size: 38 to 43 students on each of four floors, 7 students on the first floor

Common Areas: Lounges, kitchens, and gender-inclusive and single-occupancy restrooms

Total Occupancy: 169 residents, 3% new transfer students

Built: 2012

Special Features: Upper-division (sophomore and above) building; large windows, high ceilings, and painted accent walls in student rooms; interior elevator; generous community space with game room, kitchen, and large lounge featuring family-style dining table; outdoor wood-burning fireplace; central bike storage and repair station



HOLMES

Diagrams are examples and not representative of each room. Unshaded furniture is movable. Shaded furniture is built in.

EAST, ROBERTS, WEST



East

EAST HALL, ROBERTS HALL, WEST HALL

The apartments are for those ready for a living experience a step beyond that offered by traditional residence halls, but who still desire the benefits that come with living on campus. Because so many juniors and seniors want to remain on campus, we have a more independent space for their active lifestyle. There is always a waiting list for these spaces. Residents determine the personalities of each of these three halls. On some floors apartment doors are propped open and students visit with each other throughout the day. On others, residents create a quiet haven.

Room Type: Single occupancy bedrooms

Layout: Two- and four-bedroom, apartment-style units

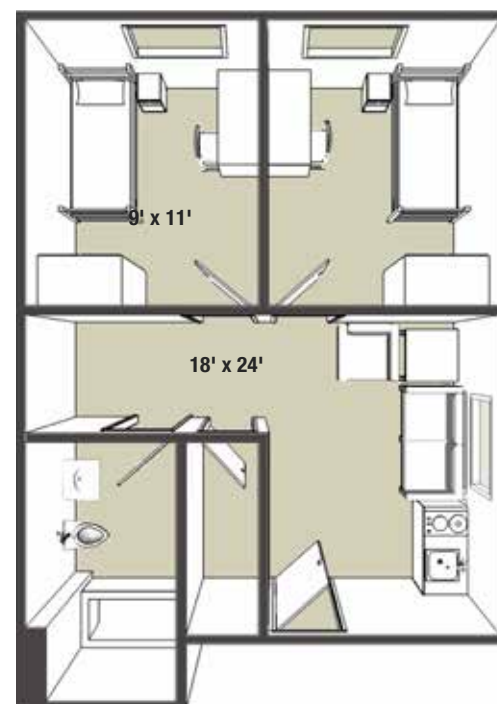
Floor Size: Three or four floors with 8 to 24 students each

Common Areas: Lounge, outdoor balcony, recreation center (East), café and convenience store (Roberts)

Total Occupancy: 168 residents, 2% new transfer students

Built: 2002

Special Features: Upper-division (junior and senior) buildings, apartment-style living, large windows, lots of storage, laundry machines on every floor, interior elevator, individual storage lockers, central bicycle storage



Diagrams are examples and not representative of each room. Unshaded furniture is movable. Shaded furniture is built in.



GO.LCLARK.EDU/CAMPUS_LIVING

Lewis & Clark
College

Office of Campus Living
0615 S.W. Palatine Hill Road
Portland, Oregon 97219

503-768-7123
503-768-7977 fax
living@lclark.edu

Joe-Barry Gardner
Interim Director of Campus Living
503-768-7757
jgardner@lclark.edu

lc_housing

lewisandclarkcollege

lewisandclarkcollege

@lewisandclark

lewisandclark



Welcome Home!

~ Your Campus Living Family



We're excited to meet you!