



Week 14: You Got This!



Less than month left in the semester, woohoo! Remember that the IME Suite is available as a study space as we gear up for finals! IME celebrates ADPI (Asian Diaspora Pacific Islander) Heritage Month this month, so keep an eye out for events planned by IME in collaboration with our ADPI Heritage Month Committee. Additionally, the IME Banquet is this week! Come to celebrate our graduating seniors and to honor our I.D.E.A. Catalyst Award recipients.

For PDF versions of archived, visit the [IME website](#) or click [this link](#).

What's Happening

Here's what's in this week's IME Newsletter:

ADPI Heritage Month Events

- Calendar of Events

IME Events

- Non-Binary/ Queer Student Athlete Community Circle
- IME Banquet: This Thursday, 5-7pm in Stamm
- IME Cookbook 2024
- Queer Community and Allies Walk to Tryon Creek
- Last Adulthood While First-Gen Lunch for the semester!
- Anything But a Cup Ice Cream Social!

More Events

- Lunch with a Leader: Kamelah Adams
- Lavender Graduation
- Neurodivergent Graduation!
- Neurodivergent Necessities Fund

ADPI Heritage Month

Upcoming Events

April	Event	Time
1	ADPI Dinner #1 in IME Suite	6:30 pm
3	Chinese Club: Mahjong Workshop in Trail Room	7:00-9:00 pm
4	VSA: Mai American Screening in Miller 102 Documentary by Kevin Truong	5:00 pm
5	HSU & SASA: Holi Festival at SOA Lawn	4:30 - 6:00 pm
6	Chinese Club: Lan Su Garden Trip Connect with cclub@iclarck.edu for more information	
8	VSA: Bamboo Painting in Platteau Main Room	4:00-5:00 pm
8	IME: ADPI Community Circle in IME Suite	6:00 pm
9	Chinese Club: Calligraphy Night Connect with cclub@iclarck.edu for more information	

IME logo | ADPI Heritage Month 2024

Upcoming Events

April	Event	Time
11	ASU Graduation in Smith Hall	5:00-7:00pm
13	Kapamilya Mixer in IME Suite	12:00-2:00pm
14	Chinese Club x Japan Club x ASU: ADPI Month Picnic Connect with japan@iclarck.edu for more info	12:00-2:00 pm
15	VSA: Spring Roll Event in Odell Annex Kitchen	4:00 - 5:00 pm
18	Kapamilya X IME: Karaoke Night at IME Suite	7:00 pm
21	Hawaii Club: Lu'au at Pamplin Gym	4:00-8:00pm
26	ADPI Dinner #2 in IME Suite	6:30 pm
26	VSA: Make Vietnamese Coffee in Odell main Kitchen	3:00 - 5:30 pm

IME logo | ADPI Heritage Month 2024

ADPI Heritage Month: Calendar of Events

Join us in celebrating Asian Diaspora* Pacific Islander (ADPI) Heritage Month! Our month of events is being led by the ADPI Heritage Month Committee, Asian Student Union, Hawai'i Club, Japan Club, China Club, Hindu Student Union, South Asian Student Association, Kapamilya, and the Inclusion and Multicultural Engagement (IME) office. Come celebrate and learn about the diverse cultures, traditions, and history within the Asian Diaspora and Pacific Islander community.

*The term diaspora relates to a community of origin and is used to refer to migrants who have left their countries only recently or temporarily.

(Note: ADPI Heritage Month is typically celebrated in May)

IME Events

Non-Binary/Queer Student-Athlete Community Circle

Tuesday April 16
5:30-6:30pm
IME Suite

Come join and be in community and share experiences, ask questions, and chat.



IME Banquet

Thursday, April 18
5:00-7:00pm
Stamm

SAVE the Date! IME's annual banquet is this Thursday! Come celebrate and honor the IDEA Catalysts Awardees and your IME seniors.

This is a time to celebrate IME students and graduates.

IME Cookbook 2024

IME has had many great conversations about how to share and care for so many cultures and identities. The topic of food and family always came up in these special moments. We introduce the IME Cookbook: share your/your family's recipe, the cultural significance, and why it is important to you. Use the QR code to submit your recipes to IME. In collaboration with Bon Appetit, three submissions will be selected each month to be added to the dinner menu. For the recipes that get selected, you will have the chance to get into the kitchen (working back of house) and taste test the meal while being cooked and just before it is served.



Submit Your
Recipe

Queer Community and Allies Walk to



Tryon Creek

Tuesday, April 16

11:30am

Meet at the Pio Stop in front of Fowler

Need a break from studying? Come join members of the LGBTQ+ community and allies on a morning walk to Tryon Creek. Meet by the Pio Stop in front of Fowler at 11:30. Walking shoes recommended.

RSVP
Here

Last Adulting While First-Gen Lunch for the semester!

Wednesday, April 17

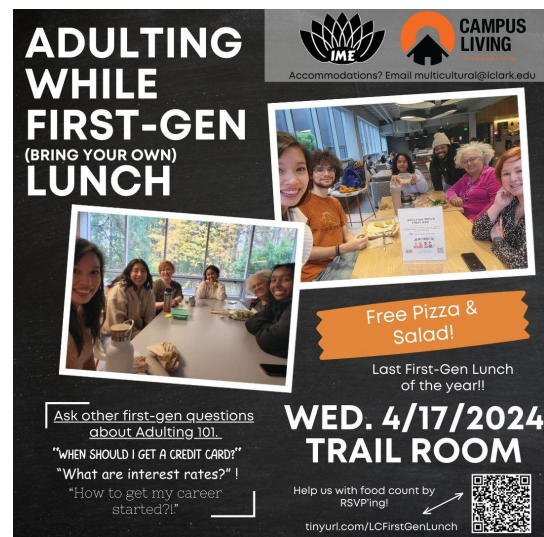
11:00-1:00pm

Trail Room

Join us for the last Adulting While First-Gen Lunch! We will be serving pizza and salad for those who are able to join us! Please RSVP so we know how much food to get!

We will meet at our usual location: Trail Room from 11-1pm (near the back stage). We'll have our sign/flyer so you can't miss us!

Question? Accommodations? Email IME!



RSVP
Here



Anything But a Cup Ice Cream Social!

Wednesday, April 24

3:30-5:00pm

IME Suite (cold/rain) or Lawn by Career Center (warm/sun)

Celebrate the end of the school year with IME!! We challenge you to bring something creative to put your ice cream! We'll vote and winner will receive a giftcard!

We'll also have regular cups and cones for those who do not want to participate.

More Events



Lunch with a Leader: Kamelah Adams

Thursday, April 18
11:30am-1:00pm
JRHH 344

Come listen to founder, Kamelah Adams who sells products that allow people to speak their truth without uttering a word. Engage with Kamelah as she talk about the B side of her resume and her passion to impact others. All students invited, free lunch. Limit of 20, registration required.

[Learn More and Register Here](#)

Queer Student Union Presents:

LAVENDER GRADUATION

An end-of-year celebration of our LGBTQ+ graduating seniors

Friday, April 19 | 4:00-6:00pm
Gregg Pavilion

General RSVP

Senior RSVP

Email qsu@clark.edu with questions



Lavender Graduation

Friday, April 19
4:00-6:00pm
Gregg Pavilion

Join QSU in honoring graduating seniors in the LGBTQ+ community. Graduating seniors will be given a lavender cord to wear during graduation. We will have a short ceremony followed by a dinner and social. All are welcome, regardless of if you are a graduating senior.

[Senior RSVP](#)

[General RSVP](#)

Neurodivergent Graduation!

Tuesday, April 23
4:00-6:00pm
Smith Hall

NDSU is excited to announce our Neurodivergent Graduation! It will be on April 23rd from 4-6 pm in Smith Hall! The event is open to everyone regardless of if you are a graduating senior or not.

We will be passing out cords and gift bags to graduating seniors. Respirator masks are required and we will have masks to hand out as needed.

RSVP
Here

NEURODIVERGENT Student Union Presents
GRADUATION!

Come celebrate our neurodivergent graduating seniors!

**April 23rd
4-6 pm
Smith Hall**



Respirator Masks are required and provided if needed.

No required dress code

RSVP to event with QR code or bit.ly.com/NDGrad24

Email us at neurodivergent@lclark.edu with any questions

The Neurodivergent Student Union
Neurodivergent Necessities Fund
is OPEN for 2023-24!

Need financial support for an expense* related to a learning difference or other neurodivergence?



APPLY NOW!

No diagnosis or membership necessary

Questions? email neurodivergent@lclark.edu

*the Neurodivergent Necessities Fund is not able to cover medical costs at this time.

Neurodivergent Necessities Fund

There is only one week remaining to apply to the Neurodivergent Necessities Fund! Need something to help with sensory needs, executive dysfunction and/or academic assistance? Apply to our Neurodivergent Necessities Fund!

There is a \$50 limitation, including shipping. The form closes on April 17th at 11:59 pm! More information is in the flier below.

Apply
Here

Visit the IME Suite on the 3rd floor of Fowler: 9-5pm Monday to Friday

Interested in submitting something to be added to the IME Newsletter?

If you would like to submit something to be added to the IME newsletter, please fill out the form below. The IME newsletter goes out every Monday morning (or Tuesday if Monday is a holiday). All submissions to make it into the weekly newsletter must be done by Friday at 5pm or they will be put in the next week's newsletter.

Newsletter Submission

Stay Connected with IME



Lewis & Clark College | 0615 SW Palatine Hill Rd., Portland, OR 97219

[Unsubscribe multicultural@lclark.edu](#)

[Update Profile](#) | [Constant Contact Data Notice](#)

Sent by multicultural@lclark.edu powered by



Try email marketing for free today!