



Week 14: Hang in There!



With the semester wrapping up and finals just around the corner, IME knows this may be a stressful time for everyone. During the upcoming reading days, the IME Suite will be open for your studying or chill needs, so be sure to stop by if you are in need of a quiet space to study. We have snacks!

For PDF versions of archived, visit the [IME website](#) or click [this link](#).

What's Happening

Here's what's in this week's IME Newsletter:

IME Events

- Winter Wonderland
- The Collective Presents: Lineups and Fades
- Essential Needs Program
- Queer Jeopardy Night!
- Join the 2024-25 IME Team!
- End Semester Check-In: Come make Gratitude Cards and Chat

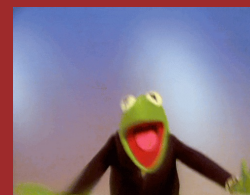
More Events

- Apply for 2024-25 Student Leader Positions
- VietCafé: A Vietnamese Robusta Taste

- Neurodivergent Necessities Fund is NOW OPEN!
- Social Support on Campus - Survey
- Get Involved with Native Student Union!
- Meaningful Care Conference; Surviving and Thriving: Beyond Resilience



IME Events



Essential Needs Program

IME is launching a new initiative that provides fill-ins for essential items we recognize can be costly. Please take what you need guilt-free!

These items will be available in a basket during IME working hours. Items include toothbrush, toothpaste, body wash, deodorant, and lotion.

For more resources, check out the ReUse Room and the EIJC Grant.

If you need an item that is not provided, please email multicultural@lclark.edu

Essential Needs Initiative

Take what you need
Don't feel guilty!

- IME is launching a new initiative to provide fill-ins for essential items we recognize can be costly
- If you need an item we don't provide, please contact us!

Items include

- Toothbrush,
- Toothpaste,
- Body Soap,
- Deodorant,
- & Lotion

Need more resources? Check out

ReUse Room Hours:
Wednesday, Friday
from 2pm - 5pm

EIJC Grant:

Find these supplies in the IME Suite

questions? email
multicultural@lclark.edu

IME WINTER

WONDERLAND

WHEN: WEDNESDAY, DEC. 6TH
TIME: 5PM - 7PM
WHERE: EAST STAMM

RSVP BY WED. NOV. 29TH

RSVP
Here

Winter Wonderland

Wednesday, December 6
5:00-7:00pm
Stamm East

It's that time of year again...IME Winter Wonderland! Come for games, food, photos, and to learn more about winter holidays across the world. Food and drinks will be provided, along with super fun activities (games, contests, photo booth, etc.)

Please RSVP with the link below or scan the QR code.

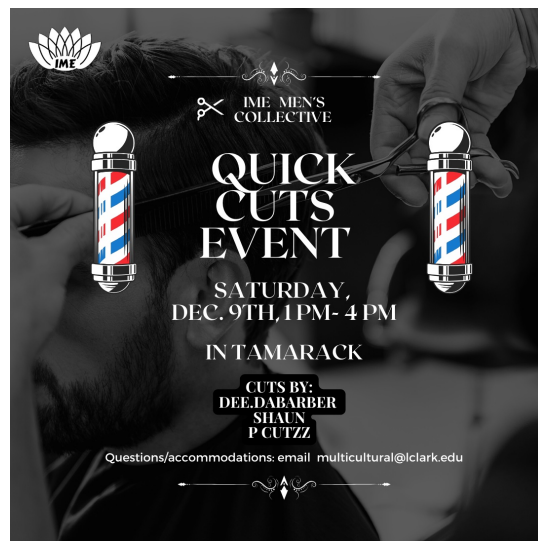
The Collective Presents: Lineups and Fades

Saturday, December 9

1:00-4:00pm

Tamarack (located between Forest halls and the basketball courts)

As the holiday season approaches, we want to express some joy and love your way (aka sending you home sharp). Let us clean up and enhance your beard for a trip back home. We look forward to treating you to a lineup and fade for this holiday season.



RSVP
Here

Queer Jeopardy Night!

Friday, December 8

4:30-6:00pm

IME Suite (3rd Floor Fowler)

Want to de-stress before finals and have some fun? Come join us for a fun night of trivia. Test your knowledge of queer icons, history, and media! Compete individually or as a team. There will be snacks and prizes. Open to anyone! You do not have to identify as LGBTQIA+ to compete.

RSVP appreciated.

Join the 2024-25 IME Team!

IME is hiring for next academic year! Consider joining our IME staff team or becoming a Great Expectations Mentorship (GEM) Mentor!

Applications for staff closes on January 28th! Applications for GEM Mentors closes on February 11th! You can apply to both!

Student Staff
Application

GEM Mentor



End of Semester Check-in

Come make gratitude cards and chat about:

- ☐ Changing/uncertainty about major
- ☐ Returning home for the first time for a long break
- ☐ How was your first semester
- ☐ Successes and Improvements
- ☐ Whatever else you'd like to chat about

Join us in the IME Suite (Fowler 325)

Thursday Dec. 14th from 2-4pm

Hot cocoa and cider will be provided

Questions/accommodations email
multicultural@lclark.edu



End Semester Check-In: Come make Gratitude Cards and Chat

Thursday, December 14

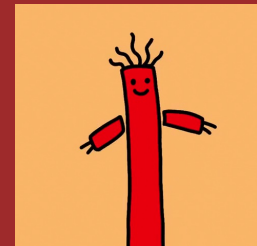
2:00-4:00pm

IME Suite (Fowler 325)

End of semester check-in and make gratitude cards for your friends, professors, staff, or family before you head out on break. We can chat about how your semester is going and what you are looking forward to during break (or anything else that comes to mind).



More Events



Apply for 2024-25 Student Leader Positions

Interested in applying to be an RA, New Student Peer Mentor (NSPM), or Great Expectations Mentor (GEM)? All position applications are now accepting applications!

Have questions about these positions? Join us on **Thursday, December 13th** to learn more:

** 10-11am at the Trial Room for Information Tabling

** 3-4pm at Watzek Library via Classroom (room 245) for a Information Session

Applications for 2024-25 Student Leader Positions open November 27th!



Interested in applying to be a Resident Advisor (RA), New Student Peer Mentor (NSPM), or Great Expectations Mentor (GEM)? All position applications open on November 27th!

Campus Living *

Learn More at:
tinyurl.com/CLOSL2024

Returning Resident Advisor
Application closes 1/21/24

New Resident Advisor
Application closes 2/11/24

Residential Experience Manager
Application closes 1/21/24



NSO and First Year Experience

tinyurl.com/NSPM2024

Returning
New Student Peer Mentor
Application closes 1/21/24

First Time
New Student Peer Mentor
Application Closes 2/11/24



Inclusion and Multicultural Engagement

tinyurl.com/GEM2024

Great Expectation Mentor (GEM)
Applications Close 2/11/24



*Students are welcome to apply for all positions they are interested in. However, it is not currently possible to serve as a RA/REM, NSPM, and GEM at the same time. Students can serve as NSPMs and GEMs at the same time and RAs and GEMs at the same time. However, it is not possible to serve as an RA/REM and NSPM at the same time. Students who are offered an RA/REM and NSPM position will need to decide which position they prefer to serve in.

Questions about a position? Contact:
Theresab@lclark.edu for Resident Advisor or REM Positions
NSO@lclark.edu for New Student Peer Mentors
Multicultural@lclark.edu for Great Expectations Mentors

VietCafé: A Vietnamese Robusta Taste

Sunday, December 10

2:30-5:00pm

IME Suite (3rd Floor Fowler)



RSVP
Here

Neurodivergent Necessities Fund is NOW OPEN!

We are proud to announce that Neurodivergent Student Union is officially launching our Neurodivergent Necessities Fund!

Our fund will cover anything under \$50 that falls under neurodivergent needs (except for medical expenses like doctor appointments or prescription medications). More details can be found at the beginning of the form for applying.

Please email us at neurodivergent@lclark.edu with any and all questions!

Are you busy with your life these days? Make your coffee or dalgona and have a relaxing moment at VietCafé! A sip of Vietnamese robusta can freshen up your mind.

Join us for a cup of happiness and share your stories! See you on Sunday.

*the Neurodivergent Necessities Fund is not able to cover medical costs at this time.

Apply
Here

Social Support on Campus - Survey

For my senior thesis, I am conducting a study on social media use and its impact on sense of belonging here at L&C. I would appreciate it if you all could participate! To participate please use the link or scan the QR code below! All students are encouraged to participate!

Social Support on campus

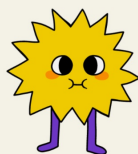
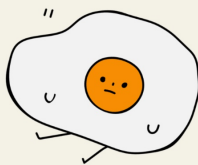


[Survey Link](#)

Hi everyone!

Please consider taking this short 5 minute survey!

For my senior thesis, I am conducting a study on social media use and its impact on sense of belonging here at L&C. I would appreciate it if you all could participate!



Get Involved with Native Student Union!

Join the Native Student Union and be part of something special! We're all about celebrating cultures, building friendships, and making our campus feel like home.

Whether you're Native, interested in learning, or just want to be part of a cool crew, we want you!

We do fun events, share stories, and support each other. Please come and get involved!



[Interest Form](#)

Meaningful Care Conference; Surviving and Thriving: Beyond Resilience

The 2024 Meaningful Care Conference is the effort of a group of 2SLGBTQ+ focused community programs and individuals. The goal is to provide healthcare provision, utilization, satisfaction, and outcomes for 2SLGBTQ+ consumers. **Event is on March 27, 2024, in Portland, Oregon.**

Email rgreim@orpca.org AND erin@bbbcollective.org

Visit the IME Suite on the 3rd floor of Fowler: 9-5pm Monday to Friday

Interested in submitting something to be added to the IME Newsletter?

If you would like to submit something to be added to the IME newsletter, please fill out the form below. The IME newsletter goes out every Monday morning (or Tuesday if Monday is a holiday). All submissions to make it into the weekly newsletter must be done by Monday at 9am or they will be added to the following week's newsletter. ***For the Spring 2024 semester, please complete this Google Form by Friday at 5pm to ensure it gets included in the following Monday's newsletter.***

Newsletter Submission

Stay Connected with IME



Lewis & Clark College | 0615 SW Palatine Hill Rd., Portland, OR 97219

[Unsubscribe](mailto:unsubscribe@lclark.edu) multicultural@lclark.edu

[Update Profile](#) | [Constant Contact Data
Notice](#)

Sent by multicultural@lclark.edu powered by



Try email marketing for free today!