

welcome



You belong here! At Lewis & Clark,
you'll find residential communities
that provide opportunities for social
interaction, facilitate personal growth,
and support your academic pursuits.
We're excited for you to join us!



options

Lewis & Clark's diverse residence halls provide a variety of room types, community sizes, living-learning communities, and amenities.

We offer both single-sex and co-ed floors with single-sex or co-ed restroom options. Campus Living is committed to providing its students with the most comfortable living situation possible, so sex-neutral housing is also available.

For some students, Lewis & Clark's male-male or female-female roommate pairing system is not always the most comfortable option. Our housing practices provide sex-neutral housing to students of alternative sexuality or gender identity, as well as their allies, and other students who would feel more comfortable and safer in a living environment other than the traditional roommate pairings.

For more information, visit our website at go.lclark.edu/campus_living.

gathering spaces

In addition to the residence hall lounges, there are larger spaces where students from across campus gather. These are just a few of our students' favorite spots to work and play on our beautiful campus:

- **MAGGIE'S** Open daily until midnight, this café and convenience store boasts smoothies, freshly baked desserts, quick meals, and, of course, coffee and tea.
- **EAST RECREATION CENTER** Complete with workout equipment, a pool table, a Ping-Pong table, and a foosball table, the center is a great place to have fun with friends or to find a little stress relief on your own.
- **PLATTEAU** This student-run cooperative art center located in Platt Hall includes a ceramics studio, photography lab, dance studio, and sound isolation room for music.
- **PAMPLIN SPORTS CENTER** The weight room, swimming pool, outdoor track, covered tennis courts, and basketball courts are open to all students and have recreational hours almost every day.

meal plans

Omnivores, vegetarians, and vegans will all find plenty of delicious food to eat here. Our award-winning food service provider, Bon Appétit, is committed to serving only the freshest food, prepared from scratch. You'll choose the meal plan that best matches your appetite:

- The 14 Meal Plan allows you to select any 14 of the 19 meals offered each week in the main dining room in the student center.
- Two plans—the 14 Flex Meal Plan and 10 Flex Meal Plan—include 14 or 10 meals each week plus flex points that can be used like cash in any of the Bon Appétit outlets on campus.
- The 19 All-Access Meal Plan allows you to enter the main dining room as many times as you wish during a meal period.

Additionally, you may choose to exchange a meal in the main dining room for a meal equivalency in our Trail Room. Meal equivalencies are available for lunch and dinner Sunday night through Thursday night.



Our RA is not only always available, but is always willing to give each and every resident her full opinion and constructive advice.
Hannah H. '16



campus living staff

Each hall complex is managed by a full-time professional area director (AD) who lives in the hall and coordinates all aspects of the community, including coordinating programming efforts; participating in the student conduct review process; and providing counseling, mediation, and crisis management as necessary. The AD also selects, trains, and supervises resident advisors, student staff members who live and work with residents.

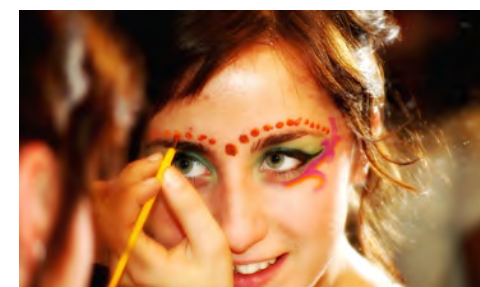
safety+security

Lewis & Clark takes many precautions to promote the safety and welfare of all campus residents:

- Outside entrance doors are equipped with card readers activated by student identification cards. An alarm will sound if outside doors are left propped open.
- Resident advisors in each complex are on duty every night and can respond within minutes to any concern or emergency.
- The Office of Campus Safety is staffed 24 hours a day to respond to emergencies and work cooperatively with hall staff and residents.
- Campus Living staff members conduct health and safety inspections of each room once every semester and fire drills twice each semester to ensure students' safety.

At Lewis & Clark, your education continues even after you leave the classroom. In all of our residence hall communities, you'll find peers and mentors who enrich your college experience. In our living-learning communities, new and continuing students, staff, and faculty take that even further.

Living-learning communities bring together a challenging curriculum with cocurricular experiences that expand your learning beyond the classroom and integrate it with your daily campus life.



Visual and Performing Arts: Platt West

The VAPA community unites creative people who engage and share in artistic self-expression. Residents cocreate holistic education through collaboration with faculty, staff, and the student body, integrating academic and experiential learning with a mind for life after college.

Environmental Action: Forest

Members of the Environmental Action community are learners, innovators, and principled advocates who prioritize environmental sustainability. They engage their communities on this issue through education, praxis, and critical thinking.

Multicultural Engagement: Akin

Members of this community explore the diversity of Lewis & Clark's many heritages, values, and identities. Residents collaborate to enrich the entire college community by promoting intercultural understanding and celebration, listening to underrepresented voices and perspectives, partnering with local organizations, and examining their roles in the cocreation of an accepting and pluralistic society.

Outdoor Pursuits: Forest

The Outdoor Pursuits floor is a community founded on a common interest in the great outdoors. It provides a supportive environment for learning about the outdoors, planning and coordinating outdoor trips throughout the Northwest, and connecting with others who have similar interests.

Global Village: Platt East

In the Global Village community, students enrich their cultural experiences as they reinforce their language learning in Chinese, French, German, Japanese, Russian, and Spanish. Global Villagers enroll in language classes and learn from one another as well as foreign languages faculty who live in the community to facilitate academic and cocurricular learning.

Holistic Wellness: Stewart

The Holistic Wellness community provides a supportive setting for students who believe their holistic well-being is a top priority. Students who live here take part in a variety of programs like yoga and stress management training, and they commit to avoiding alcohol, drugs, and other harmful substances and behaviors.

Interested in applying for one of our living-learning communities? You must complete a separate application in addition to your housing contract and roommate placement questionnaire. You can find and complete a unique application for each community at go.lclark.edu/living_learning. Deadline for submission is May 1, 2014.

living-learning communities

go.lclark.edu/living_learning

I have been exposed to different cultures and people who are interested in and excited about sharing their own cultures.

Yi Zhen T. '15

My RA has really made my living experience in Platt a great one. I was a little nervous jumping into college from a small town, but I feel like if I ever need anything, my RA knows all the stuff I need to know. And if she doesn't, she'll find out.

Owen P. '16

	Platt-Howard	Copeland	Stewart	Odell	Akin	Forest	Hartzfeld	East, Roberts, West	Holmes
Total occupancy	198	286	90	72	64	278	100	168	169
Beverage and snack machines		●				●			●
Big-screen TV	●	●	●	●	●	●		●	●
Cable TV in main lounge	●	●	●	●	●	●	●	●	●
Café and convenience store*								●	
Carpeted rooms	●	●	●	●	●	●	●	●	●
Exercise equipment			●					●	
Exterior door security	●	●	●	●	●	●	●	●	●
Fireplace in main lounge	●	●	●	●	●	●	●	●	●
Free voice mail	●	●	●	●	●	●	●	●	●
Individual room heat control	●	●				▲	●	●	●
Kitchens with refrigerators and microwaves	●	●	●	●	●	●	●	●	●
Free laundry facilities	●	●	●	●	●	●	●	●	●
Movable furniture in rooms	●		●	●	●	▲		●	●
Phone jack in room	●	●	●	●	●	●	●	●	●
Piano	●	●	●		●	●			●
“Quads”†		●				●		●	
Quiet study areas	●	●	●	●	●	●	●	●	●
Recreational equipment	●	●	●			●		●	●
Sex-neutral†† (by special request)	◆	●		●	●	●		●	●
Single-sex floors		●				●			
Student art center*	●								
“Triples”		●							
Upperclass student housing						▲	●	●	●
Walk-in closets			●	●	●				
Wireless Internet access	●	●	●	●	●	●	●	●	●
* Open to all students.									
† Four students to a room. Quads are available for 76 students in Copeland and 136 students in Forest.									
†† For more information about this option, see page 2.									
◆ Available in Howard only (not Platt).									
▲ Juniper only									



features of the halls

No matter which residence hall you live in, you will find these features: kitchens with refrigerators and microwave ovens, extra-long twin beds, free laundry facilities, storage rooms, bike racks, TVs with cable and DVD players in each main lounge area, and smaller shared floor lounges. Of course, each hall also has its own set of distinguishing features and characteristics. To help you make an informed choice, we have included a summary of key details on the pages that follow.

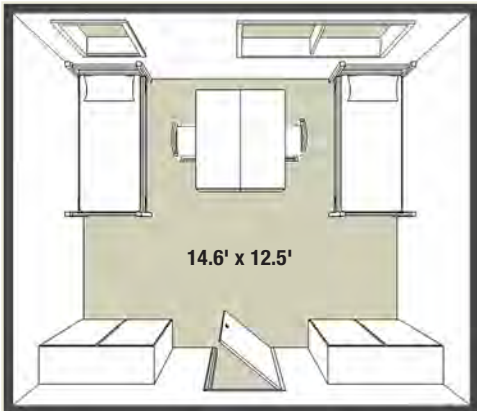
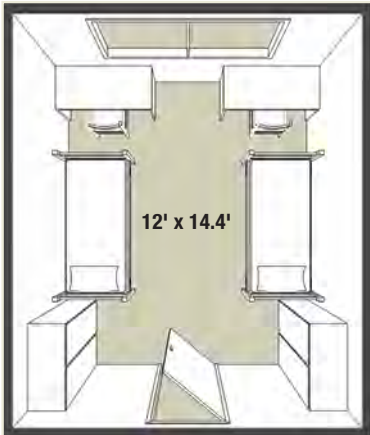


Everything is nearby, which maximizes time for doing schoolwork.

Derek J. '15



Platt



Platt-Howard

Platt-Howard Hall

Platt-Howard is full of creative energy and excitement. Residents are eager to get to know one another, explore the college experience, and become involved in what Lewis & Clark has to offer. There is a strong culture of openness and respect; students feel they can express themselves and be accepted. Residents can often be found studying in groups in the lounges, hanging out in each other's rooms, watching TV together in the main lounge, or playing pool.

Room Type: Double occupancy

Layout: Three wings, three to four stories each

Floor Size: Platt: Six floors in two wings with 18 to 20 students each

Howard: Four floors with 28 to 30 students each

Common Areas: Platt: Lounge, kitchen, and single-sex restrooms

Howard: Lounge, kitchen, and co-ed restrooms

Total Occupancy: 198 residents, 50% new students

Built: 1960

Recent Renovations: Kitchen additions in Howard (2010), new lounge furniture in Howard (2010), Platt East renovation (2012), Platt West renovation (2013), Platteau renovation (2013)

Special Features: Platt: Visual and Performing Arts and Global Village living-learning communities, home of the Platteau (see description on page 2), large main lounge with fireplace and pool table

Howard: Large basement lounge, movable furniture in rooms



Howard



Copeland

Copeland Hall

Copeland is much like Portland: a cool city with many great neighborhoods. In the main lounge, a dozen or more students watch TV or play pool or video games; others sit outside at the picnic table discussing the latest Exploration and Discovery lecture. In the hallways, still more visit at every open door. The sense of community is so strong here that residents often carry it with them to other venues, pulling together tables in the dining room, where they spend hours chatting over meals, and attending games and the theatre as a group.

Room Type: Single, double, triple, and quad occupancy

Layout: Six connected wings, each with three to four stories

Floor Size: 20 floors with 9 to 14 students each

Common Areas: Lounge, kitchen, and co-ed and single-sex restrooms

Total Occupancy: 286 residents, 60% new students

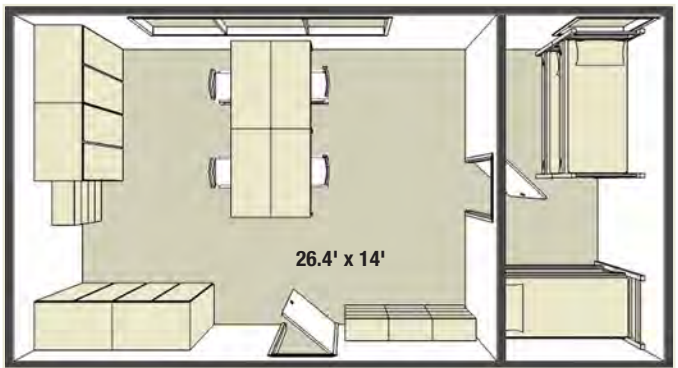
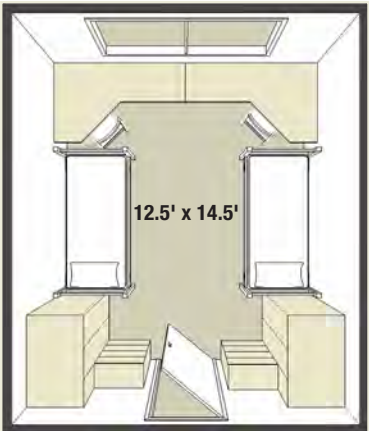
Built: 1963

Recent Renovations: New restroom partitions (2009), new mattresses (2010), kitchen upgrades (2011-12)

Special Features: Large circular main lounge with fireplace, grand piano, and pool table

I feel very lucky to have multiple close resources to go to when I need them and feel that the RAs work very hard to communicate and work together to make our community better.

Leann K. '16



Copeland

Copeland

Stewart, Akin, Odell

Stewart Hall

Stewart residents share a commitment to well-ness and to a living environment that supports healthy choices. Students here have much in common, including an interest in learning from one another. While the hall is generally quiet, weekly study breaks, the large recreation room with newly acquired exercise equipment, and activities organized by the hall staff make Stewart a lively, fun place to live.

Room Type: Single and double occupancy

Layout: Two stories

Floor Size: Five floors with 16 to 20 students each

Common Areas: Lounge, kitchen, and single-sex restrooms

Total Occupancy: 90 residents, 40% new students

Built: 1951

Recent Renovations: New carpet and lounge furniture (2010)

Special Features: Holistic Wellness living-learning community, main lounge with piano and attached kitchen, pool table and exercise equipment in large separate basement lounge, large walk-in closets, movable furniture in rooms

Akin Hall

Residents of this multiculturally themed hall are genuinely engaged and interested in learning about one another, making this a very tight-knit community. It's not uncommon for students to remain in Akin for their entire residential experience. Weekly study breaks and impromptu hall dinners featuring foods from different countries also help foster the strong sense of community here.

Room Type: Single and double occupancy

Layout: Two stories

Floor Size: Two floors with 32 students each

Common Areas: Lounge, kitchen, and single-sex and co-ed restrooms

Total Occupancy: 64 residents, 40% new students

Built: 1949

Recent Renovations: Restroom upgrade (2009), new lounge furniture (2010)

Special Features: Multicultural living-learning community; large main lounge with grand piano, fireplace, and attached kitchen; close proximity to academic center of campus; large walk-in closets; movable furniture in rooms

Odell Hall

The most centrally located of the halls and one of the smallest, Odell typically houses a close-knit community in which residents feel appreciated as individuals. The students living in this popular hall often gather in lounges, form study groups, and watch TV, play video games, or just hang out around the fireplace together.

Room Type: Double occupancy

Layout: Two stories

Floor Size: Two floors with 35 students each

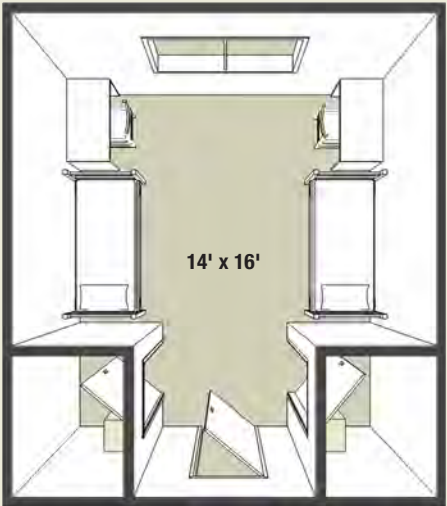
Common Areas: Lounge, kitchen, and co-ed restrooms

Total Occupancy: 72 residents, 40% new students

Built: 1957

Recent Renovations: Carpet replacement (2009), new lounge furniture (2010)

Special Features: Large, comfortable main lounge with fireplace and attached kitchen; large walk-in closets; movable furniture in rooms



Forest Hall

In many ways, Forest is like a traditional residence hall split into five small communities. This allows residents to enjoy the benefits of large and small settings alike and to find the elements that suit them best. Students with many different interests will find this an exciting, eclectic environment.

Room Type: Single, double, and quad occupancy

Layout: Five separate buildings, each with two stories

Floor Size: 10 floors with 24 students each

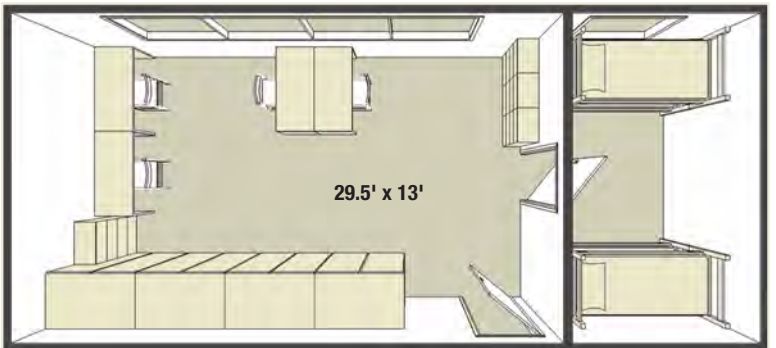
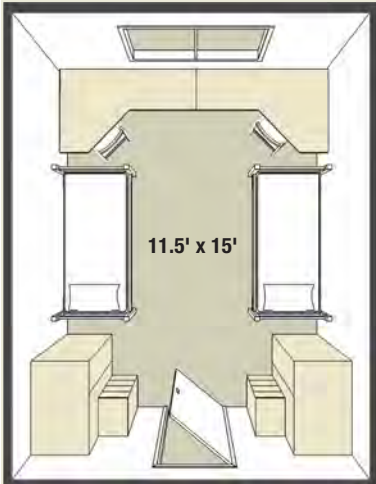
Common Areas: Lounge, kitchen, and co-ed restrooms

Total Occupancy: 278 residents, 40% new students

Built: 1964

Recent Renovations: New mattresses and lounge furniture (2011), kitchen upgrades (2011-12), Juniper renovation (2014)

Special Features: Environmental Action and Outdoor Pursuits living-learning communities, community garden, single-sex options in Spruce. Juniper provides 29 single rooms for upper-division students. Separate, central sixth building serves as main lounge for the complex with grand piano and fireplace.



Unshaded furniture is movable.
Shaded furniture is built in.

Forest

Hartzfeld

Hartzfeld Hall

Hartzfeld, which is open to second-year students and higher, appeals to people with various interests and personalities. Some like to create a quiet retreat within its brick walls, while others enjoy the opportunity the suite design affords to build close communities.

Room Type: Double occupancy

Layout: Four separate buildings, each with two stories

Floor Size: Eight floors with 12 students each

Common Areas: Living room, kitchen, and single-sex and co-ed restrooms

Total Occupancy: 100 residents, 5% new transfer students

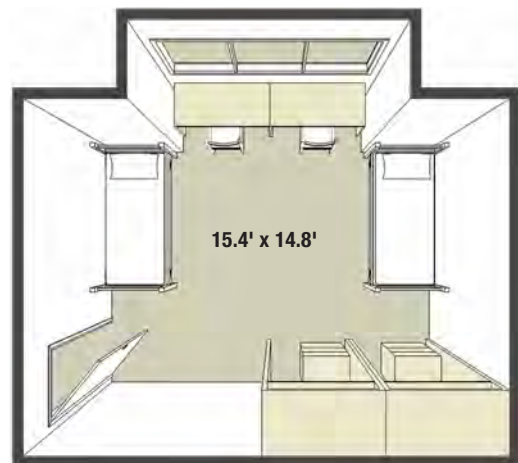
Built: 1975

Recent Renovations: New lounge furniture (2011), courtyard renovation (2012)

Special Features: Upperclass (sophomore and above) buildings, suite style (i.e., two double rooms share a bathroom)



Hartzfeld



Hartzfeld

There are benefits to living on a small campus that you cannot dream of on a larger campus. Matt D. '14

Holmes Hall

Edna L. Holmes Hall opened in August 2012 and is now home to 169 upper-division students (sophomores, juniors, seniors, and even a few graduate and law students). Rooms in Holmes are larger than the average size on campus and almost half of the rooms are single occupancy. Holmes has attained LEED (Leadership in Energy and Environmental Design) Gold certification. The eco-friendly features of the building include the use of reclaimed wood (fir and maple) in the building materials, window switches in student rooms to reduce heat when windows are open, and monitors displaying real-time energy use.

Room Type: Single and double occupancy

Layout: Five stories with elevator

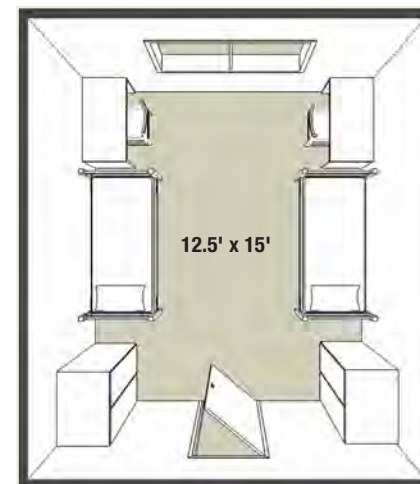
Floor Size: 38 to 43 students on each of four floors, 7 students on the first floor

Common Areas: Lounges, kitchens, and co-ed and single restrooms

Total Occupancy: 169 residents, 3% new transfer students

Built: 2012

Special Features: Upperclass building; large windows, high ceilings, and painted accent walls in student rooms; interior elevator; generous community space with game room, kitchen, and large lounge featuring family-style dining table; outdoor wood-burning fireplace; central bike storage and repair station



Unshaded furniture is movable.
Shaded furniture is built in.



Holmes



Holmes

Holmes



Roberts

East Hall, Roberts Hall, West Hall

Because so many juniors and seniors want to remain on campus, we have a more independent space for their active lifestyle. There is always a waiting list for these spaces. Residents and their personalities determine the flavor of each of these three halls. On some floors apartment doors are propped open and students visit with each other throughout the day. On others residents create a quiet haven. The campus apartments are for those ready for a living experience a step beyond that offered by traditional residence halls, but who still desire the benefits that come with living on campus.

Room Type: Single occupancy bedrooms

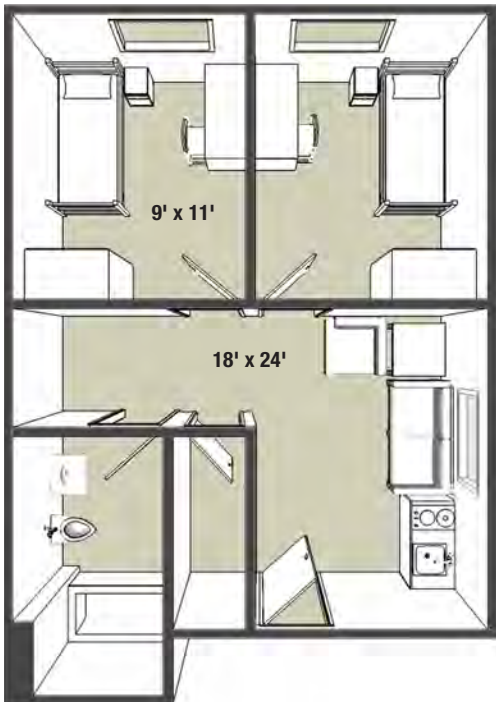
Layout: Two- and four-bedroom, apartment-style units

Floor Size: Three or four floors with 8 to 24 students each

Common Areas: Lounge, outdoor balcony, recreation center (East), café and convenience store (Roberts)

Total Occupancy: 168 residents, 2% new transfer students
Built: 2002

Special Features: Upperclass (junior and senior) buildings, apartment-style living, large windows, lots of storage, laundry machines on every floor, interior elevator, individual storage lockers, central bicycle storage



your next steps



- ☐ **Accept** your Offer of Admission: It must be postmarked no later than 11:59 p.m. Pacific time on Thursday, May 1, 2014, and requires a \$300 deposit.
- ☐ **Read** the enclosed information in the bright orange, postage-paid envelope. If you have any questions, contact us at 503-768-7123 or living@lclark.edu.
- ☐ **Complete** the Residence Hall Contract by prioritizing your hall choices, selecting a meal plan, and placing your signature at the bottom of the contract.
- ☐ If you want to apply for one of our living-learning communities, **complete** the appropriate supplemental application(s) at go.lclark.edu/living_learning.
- ☐ **Complete** the Roommate Placement Questionnaire. Remember, responding honestly will yield the best possible roommate matching.
- ☐ Put the Residence Hall Contract and Roommate Placement Questionnaire in the bright orange, postage-paid envelope. **Mail** the envelope on or before Thursday, May 1.

You will receive your hall assignment, the name of your roommate(s), and your campus mailing address in the middle of July. Plan to arrive on campus to move into your new home on Wednesday, August 27, anytime after 8 a.m. We can't wait to welcome you to campus.

Lewis & Clark College follows the letter and spirit of all equal opportunity and civil rights laws.

Lewis & Clark is committed to using resources wisely.
go.lclark.edu/printing_practices



Research suggests that students who live on campus are more likely to graduate, get better grades, and have better social skills than their counterparts who live off campus.



Office of Campus Living
503-768-7123
503-768-7977 fax
living@lclark.edu

Sandi Bottemiller
Director of Housing
and Orientation
503-768-7183
sjb@lclark.edu

Kelly Hoover
Director of Campus Living
503-768-7757
hoover@lclark.edu

www.lclark.edu

